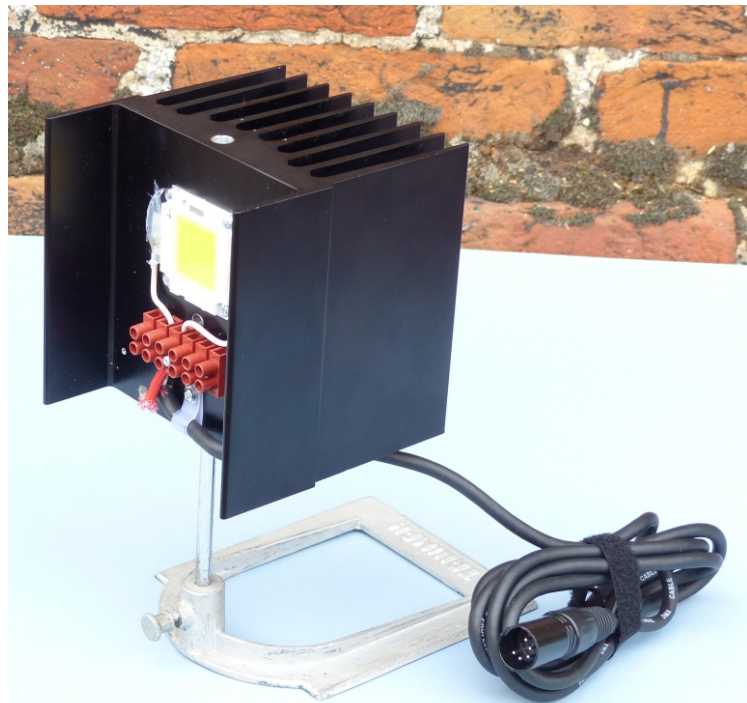


CELSUN LED LIME-LIGHT FOR MAGIC LANTERNS

CS 331

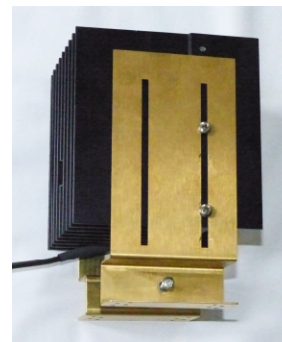


**CS 331 LED LIME-LIGHT
ON A COMMON LANTERN POLE MOUNT**

The Celsun CS331 has been specifically engineered for use in vintage magic lanterns of various types. It uses a 100 watt LED device that can produce 9000-10000 lumens: enough light for projecting on to large screens and long throws. Unlike quartz halogen (QI) or projection lamps, it produces almost no forward infra red heat that can 'cook' valuable slides and condensers. In operation LEDs do get warm and so the unit has a substantial heatsink to dissipate that warmth for reliable operation. Some projector lamps only have a given life of 25 -50 hours but the CS331 LED can be expected to last well in excess of 10,000 hours. The unit is solidly built from anodized aluminium. The 6 ft. (1.8M) connection cable is fitted with a pre-wired professional XLR for plug and play operation any Celsun Controller.



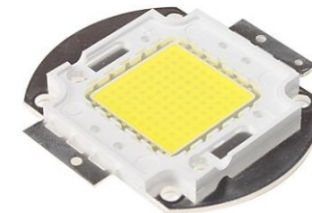
**REAR VIEW SHOWING
ADJUSTER SCREW FOR POLE MOUNT**



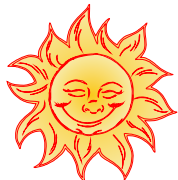
**SIDE VIEW SHOWING OPTIONAL
CS335 BRASS SUPPORT KIT**

This allows the rigid support of the CS331 unit on the lantern's lamp slide rails. This option replaces the old wobbly pole support. The vertical slots allow exact alignment to the optical axis. These brass brackets can also be used where there are no rails and where they can be simply screwed into the lantern base.

New LED flood lighting LEDs have resulted in COB lamp devices being produced at 100 watts with 9000 to 10000+ lumens of light output. These are suitable for magic lantern use because they are an array of 100 tiny LEDs arranged in 10 x 10 grid. Unlike ordinary lamps, the lantern condenser focuses the light evenly over the slide area with no vignetting (shading or high spots) and almost no forward infra-red to fry your valuable slides. The light output is as bright as a 250 - 300 watt QI lamp or an old fashioned 500 watt projector lamp. Such LEDs need a special low voltage constant current power supply provided by the Celsun CS332 controller.



- * 100 Watt LED Cool Lime-Light
 - * Suitable for Triunial, Biunial or Single lanterns
 - * Safe low voltage operation
 - * Safe for all slide & condensers
 - * Easy to use and quick to set-up
 - * No vignetting, high spots or 'hot spots'
 - * No change in colour on fade to black
 - * No light spill from rear or sides
 - * 3 way mounting options
 - * Professional XLR plug connection
 - * Built to professional standards
- for reliable operation and a long life**



New lamps for old...

www.celsun.com

Celsun

Signal House, Wimbish
Saffron Walden, Essex,
Great Britain, CB10 2XQ

tel: 07756 949 868 email sales@celsun.com

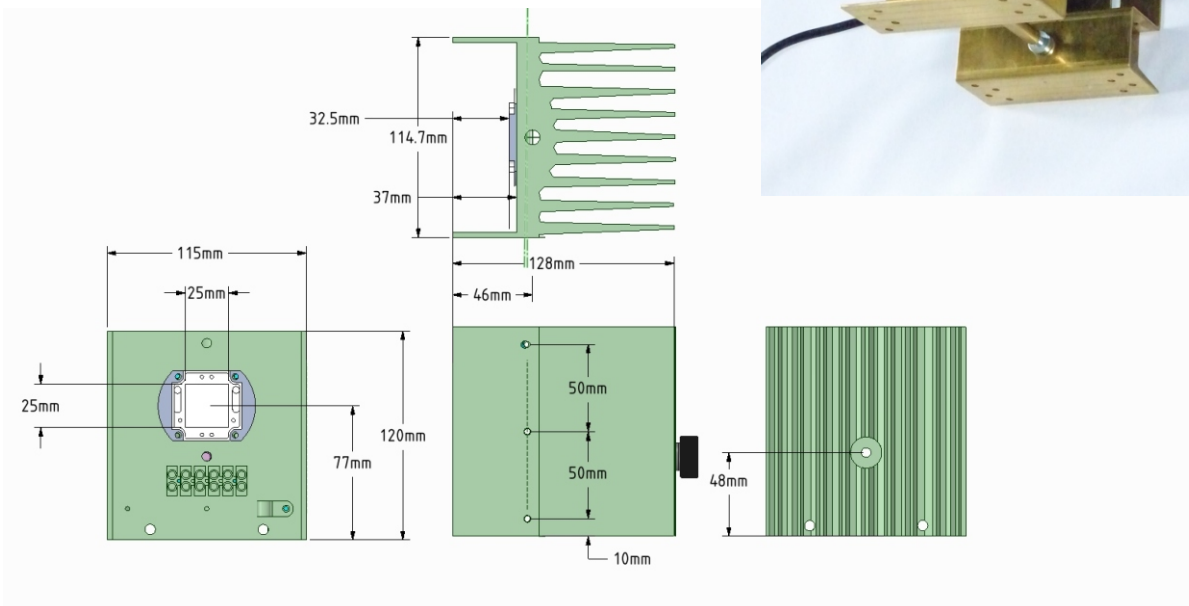
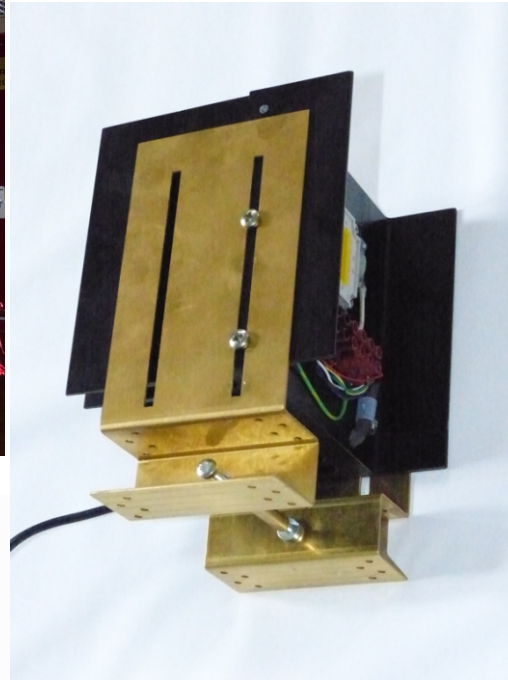


CELSUN LED LIME-LIGHT FOR MAGIC LANTERNS

CS 331



Typical Installation using optional Cs335 mounting brackets



CS331 LED Lime-Light Specifications

LED Lamp	100 Watt 36 Volt nominal
Output	9000-10000 Lumens
Colour temperature	2700°K tungsten equivalent 6000°K daylight to special order
Minimum optical height	77mm or 43mm upside down
Pole mount hole size	8mm
Locking thumb-screw	OBA / M6
Unit dimensions	120mm H x 115mm W x 127mm
Weight	1.2 Kgs / 21ozs
Power lead	Black multi-core 6ft. (1.8M)
Plug	XLR 5 pin (note <u>not</u> DMX)
Compatible controller	Celsun CS332

Celsun

Signal House, Wimbish
Saffron Walden, Essex,
Great Britain, CB10 2XQ



tel: 07756 949 868 email sales@celsun.com